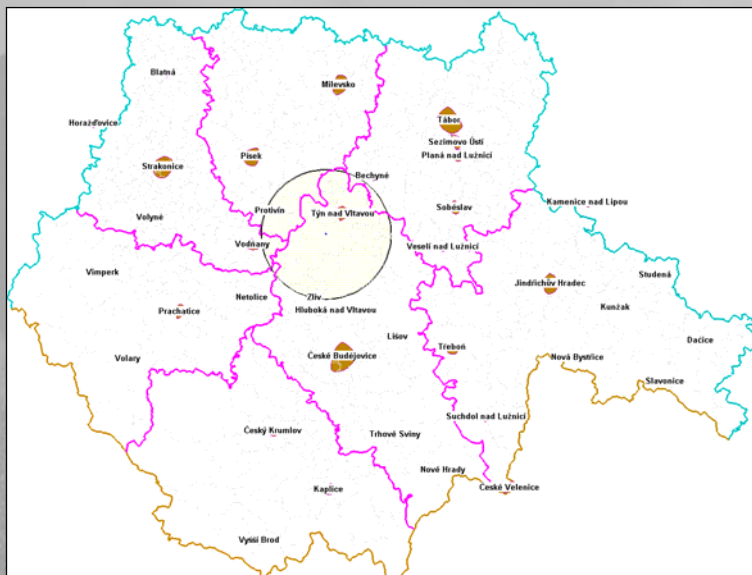


## **Socio-ecological and psychological impacts of the Temelín Nuclear Power Plant on local population**

### **Basic parameters**

- **Goal:** Long-term sociological research on population living in a vicinity of the power plant (Melk Treaty, paragraph No. 12 of the Annex)
- **Research institutions:**  
Faculty of Humanities, Charles University, Prague  
Institute of Landscape Ecology, AS CR, Č. Budějovice
- **Duration:** empirical research since 2003
- **Model area:** Region of South Bohemia (and subsamples)

**Model area = Region of South Bohemia  
(and 13km zone of emergency management)**



**Research subject**

Interpretation by locals  
„subjective“ view

- **Quality of life** of local population; affect of the power plant on it (*modified technique Quality of Life Profile – Adult version; University of Toronto*);
- **Attitudes of local people** to the power plant

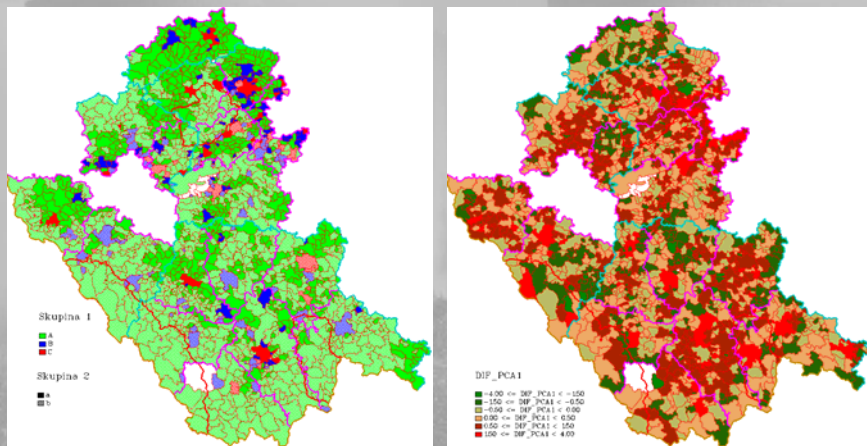
Official statistical  
Data („objective“ view)

- **Socio-economic situation** in the region (*services and infrastructure available, rate of unemployemnt, social and demographic structure*)

| <b>Methods used</b><br>(quantitative as well as qualitative analysis) |   |
|---|---|
| Life time histories   | <ul style="list-style-type: none"> <li>• <b>Biographic research (2003):</b> people directly influenced – positively or negatively – by building and operating of the power-plant (N=20)</li> </ul>  |
| A priori thematical structure   | <ul style="list-style-type: none"> <li>• <b>Key informant interviewing (2003):</b> experts and local elite (mayors, NGO, media, positively associated with TNP, regional representatives) (N=50)</li> <li>• <b>Questinnaire survey (2004):</b> adult population (N=1033)</li> </ul> |

| <b>Themes</b> (besides quality of life and attitudes to the plant )   |
|---|
| <ul style="list-style-type: none"> <li>• Changes in <b>social structure</b> caused by out- and in-migration</li> <li>• Power plant as an triggering mechanism <b>for development</b> <ul style="list-style-type: none"> <li>– induced economic a activities;</li> <li>– immigration of qualified working power</li> </ul> </li> <li>• <b>Adaptation to stress</b> <ul style="list-style-type: none"> <li>– life under risky conditions</li> <li>– compensation of risk</li> </ul> </li> </ul> |

## Spatial analysis (socio-economic situation)



## Selected outputs I - Quantitative research

- Power plant of Temelín is perceived in terms of **latent risk factor** that induces stress to inhabitants.
- At present, people have become **adapted** to the life under risky conditions.
- The **adaptation is fragile**, however. Latent risky factor can be easily activated.

## **Selected outputs II - Qualitative research**

- The power plant does not present a distortion of objectively assessed quality of life, though for a significant group of people it presents a subjectively perceived **distortion of the mental well-being**
- The **awareness** of the inhabitants about the Temelín power plant **increased**; still being not sufficient
- The awareness contributed to **polarisation** of the inhabitants' opinion rather than to the acceptance of the power plant

## **Selected outputs II - Qualitative research**

- Despite opinion polarisation, **no social antagonisms** comes into existence in any selected cross-cut in the South Bohemian area
- Permanent **distrust** in democratic character of decision-making (e.g. not keeping the promise of cheaper energy) sustains, and partly distrust in information in general, regardless the source
- Inhabitants **learned** socio-political experience, which they will undoubtedly actively apply in similar future processes.