

EU ETS:
Comparing Austria and Czech Republic

Jiřina JÍLKOVÁ
in cooperation with Michaela Lovíšková

CZ-AT-EET, Prague Sept. 3, 2007

1

Outline

Economic and environmental performance

EU ETS 2005 - 2007

2

Profile

Austria

83 858 Km²

8 mil. inhabitants

97 inh./km²

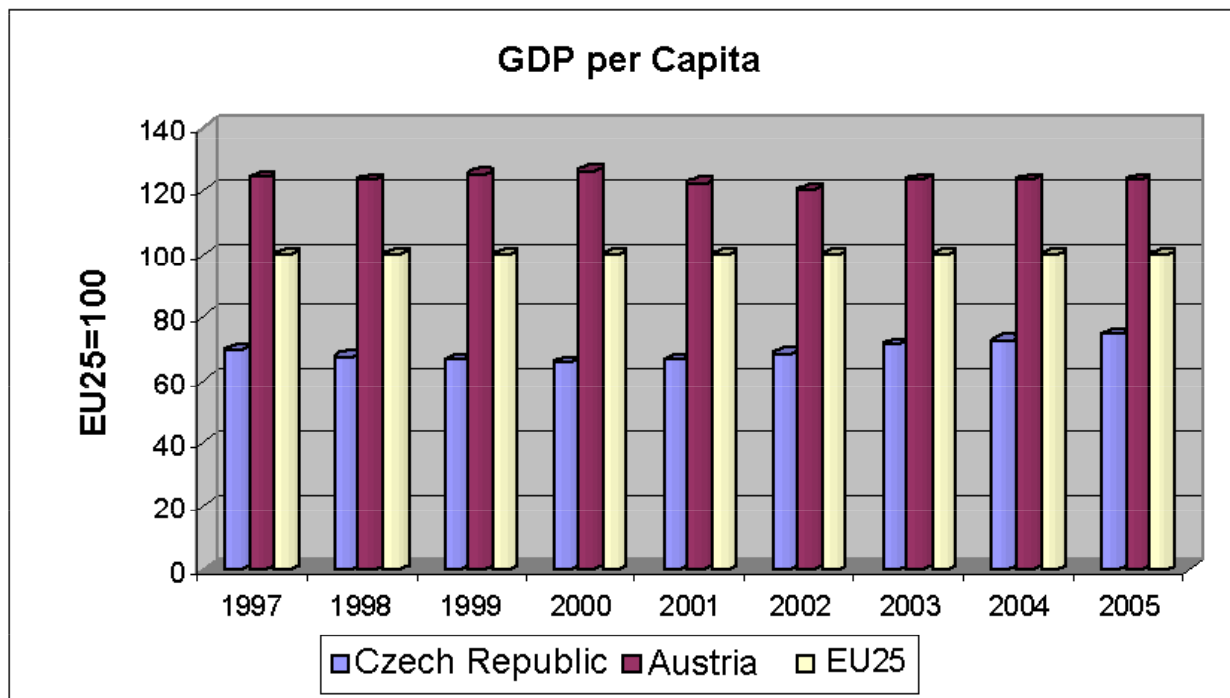
Czech Republic

76 664 km²

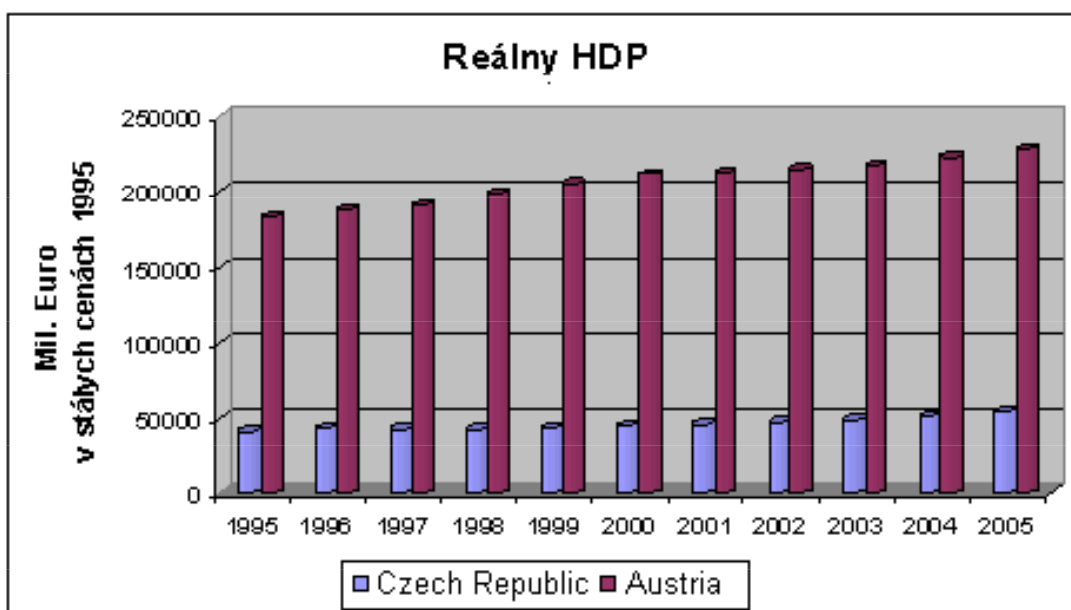
10 mil. inhabitants

129 inh./km²

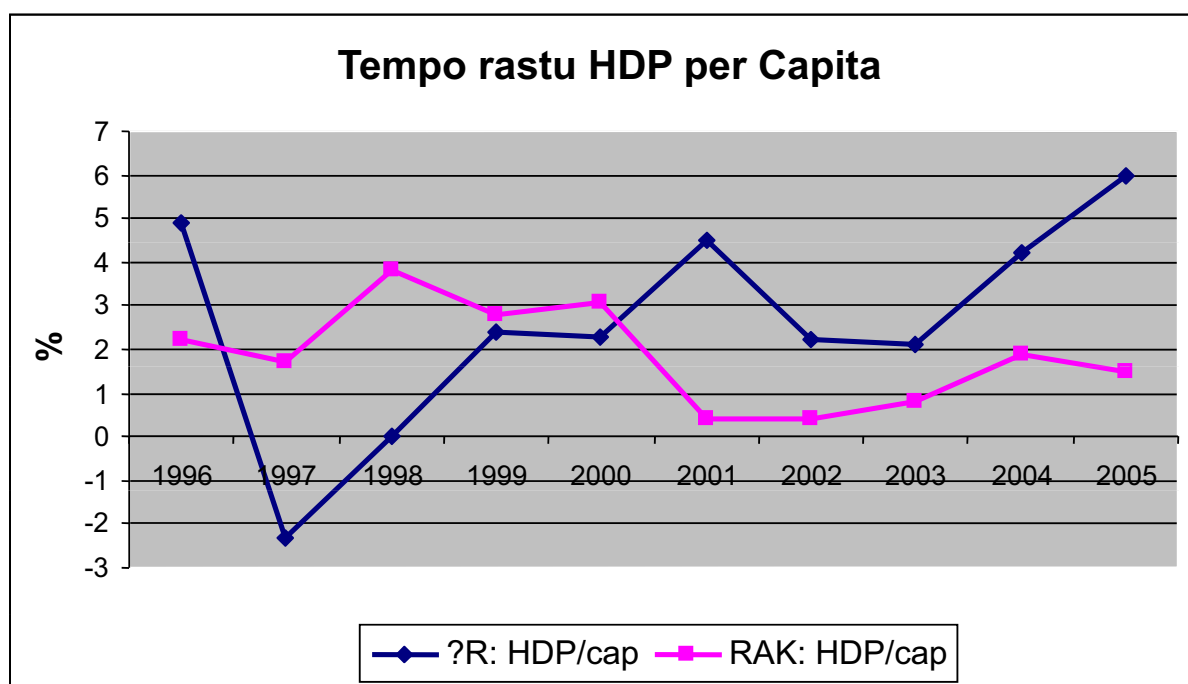
3



4

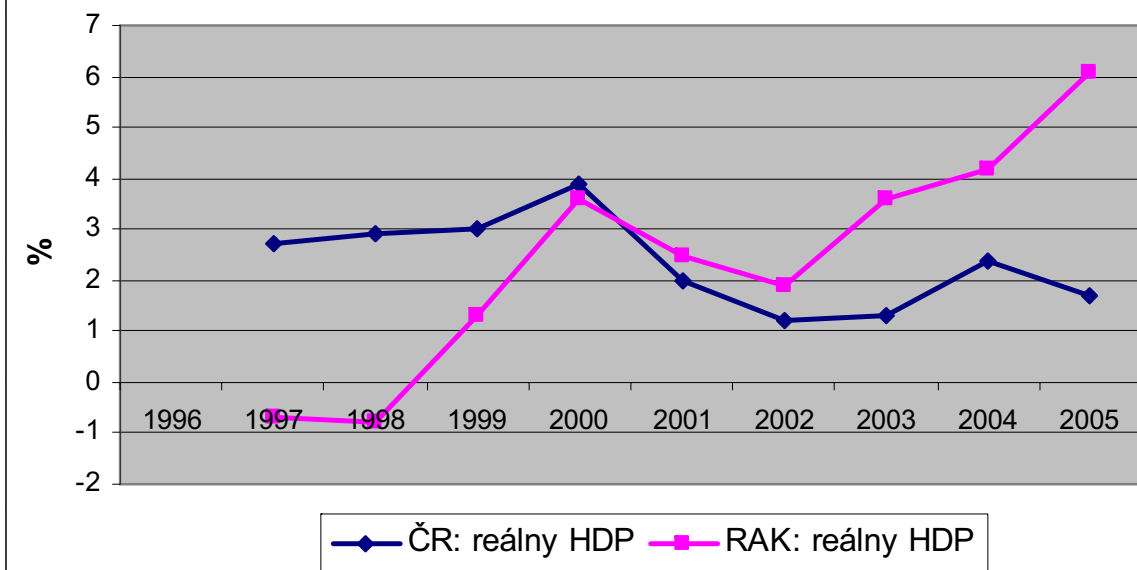


5



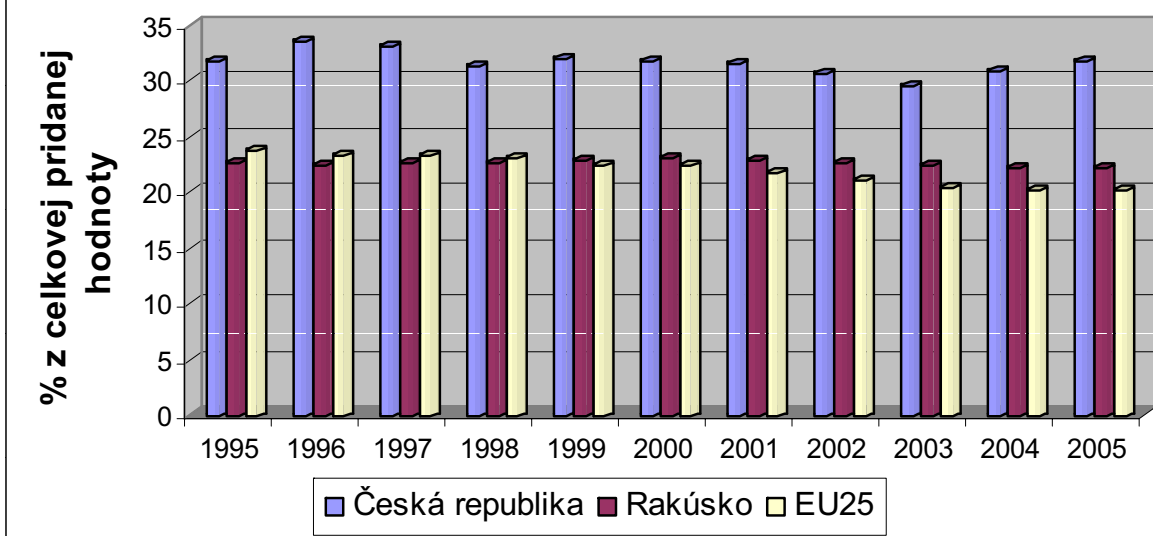
6

Tempo rastu reálneho HDP

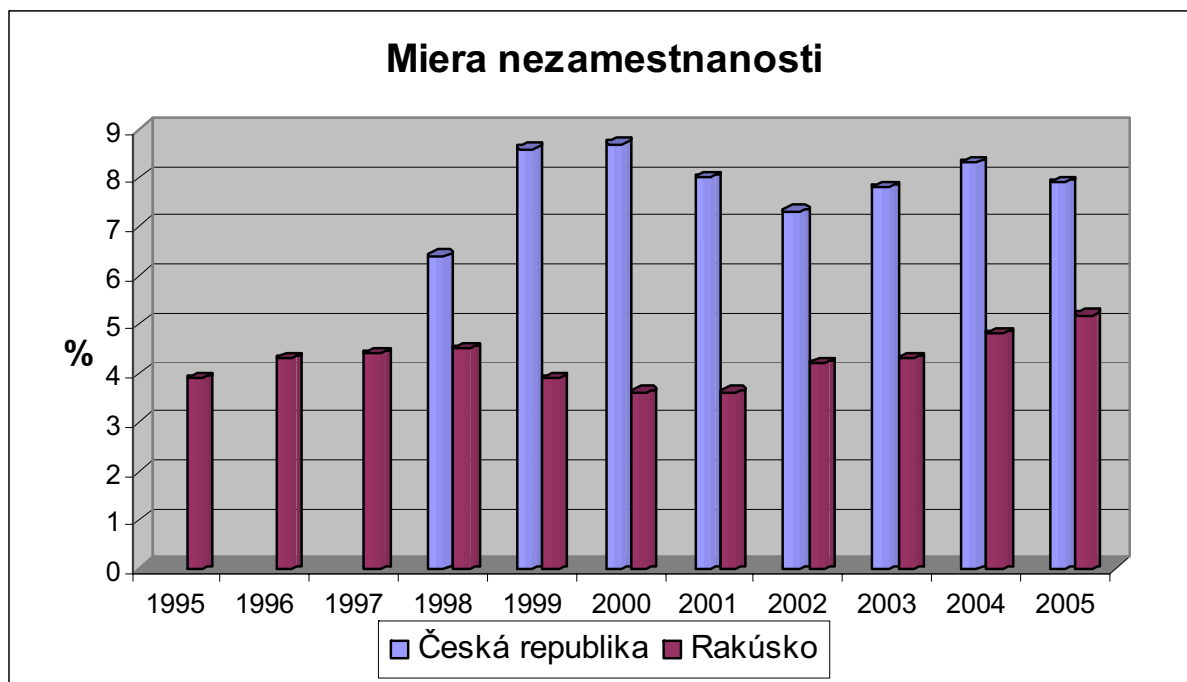


7

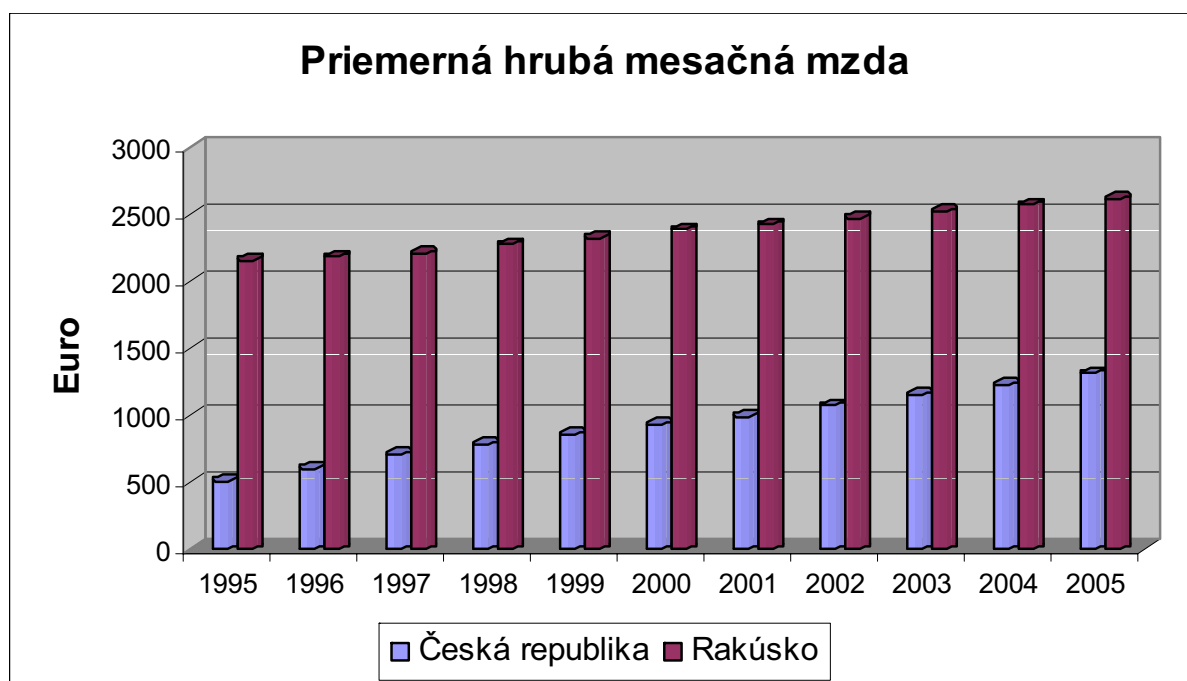
Hrubá pridaná hodnota vytvorená v sektoroch priemyslu a energetiky



8

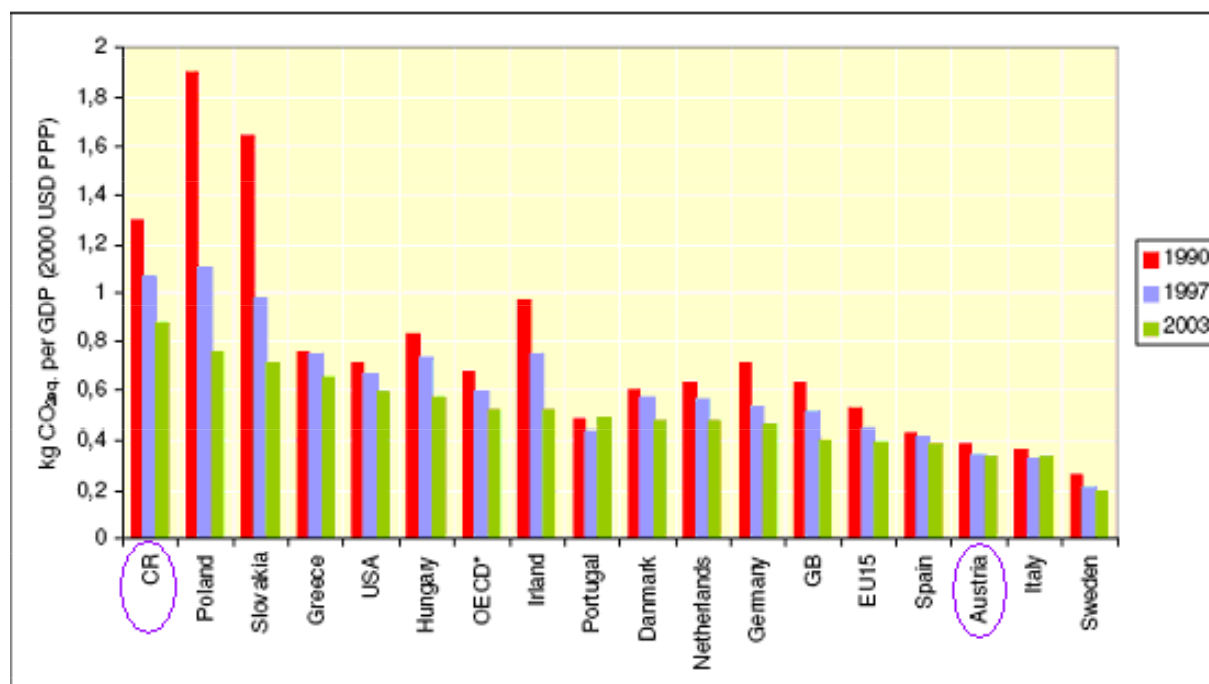


9

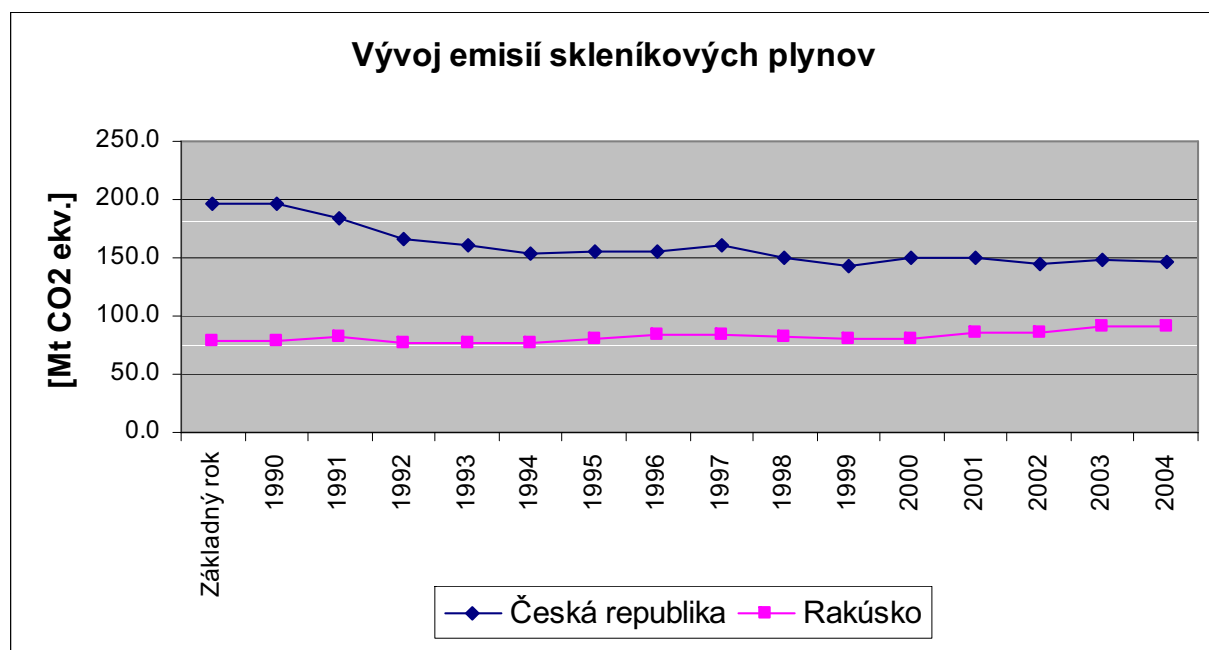


10

CO2 ekv. / HDP - medzinárodné porovanie

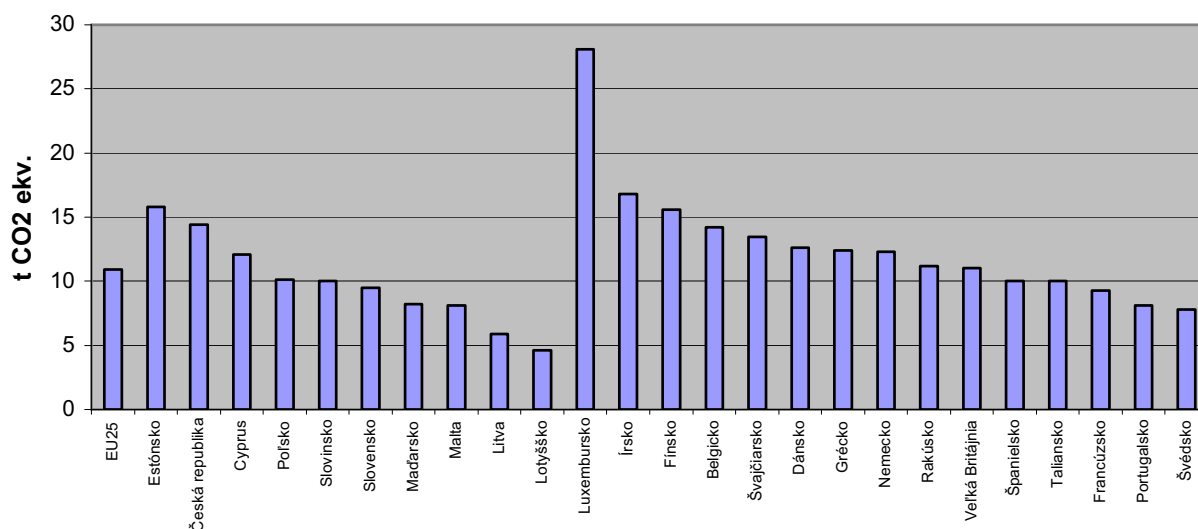


11



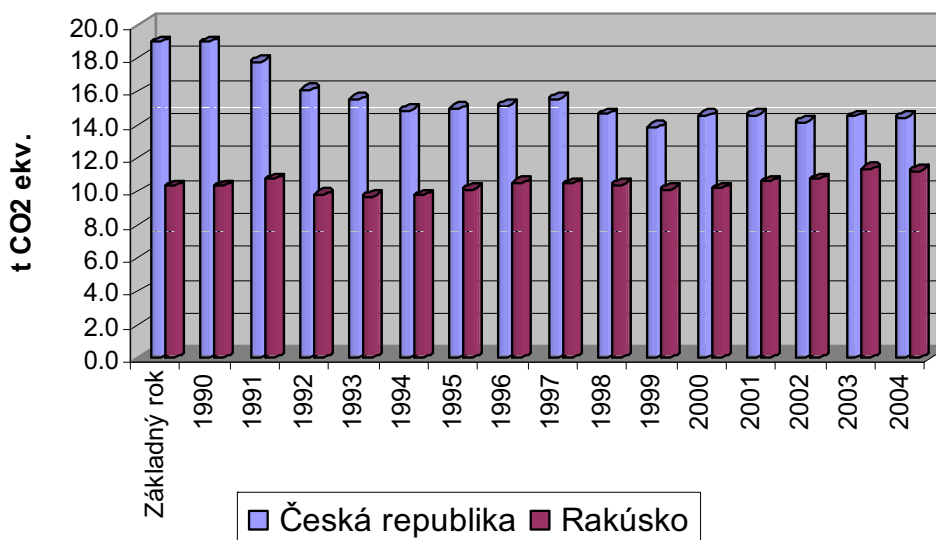
12

Množstvo emisií per capita (2004)



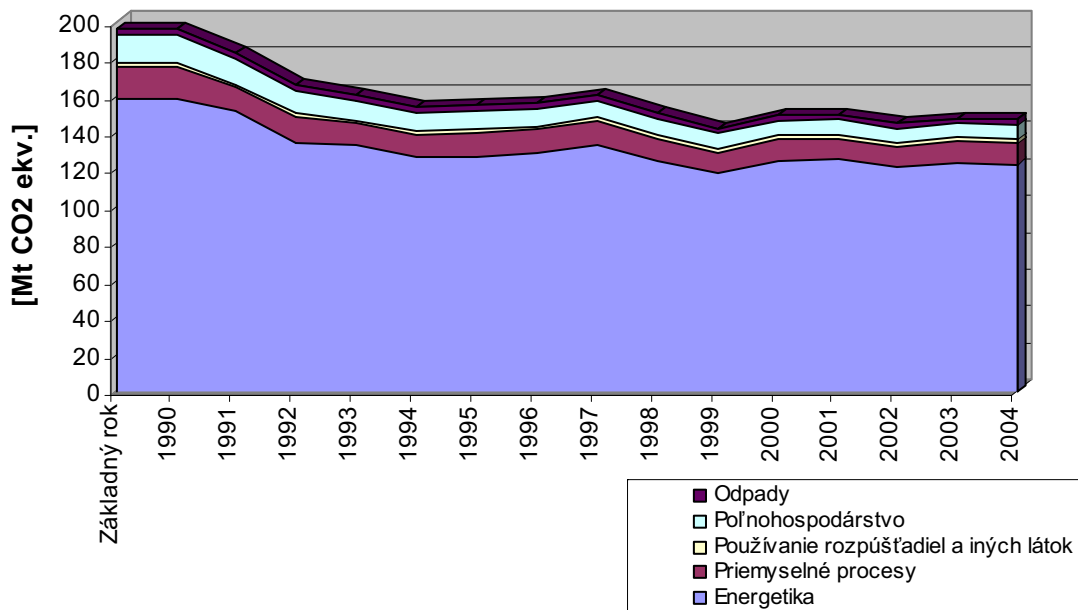
13

Vývoj emisií skleníkových plynov (per capita)



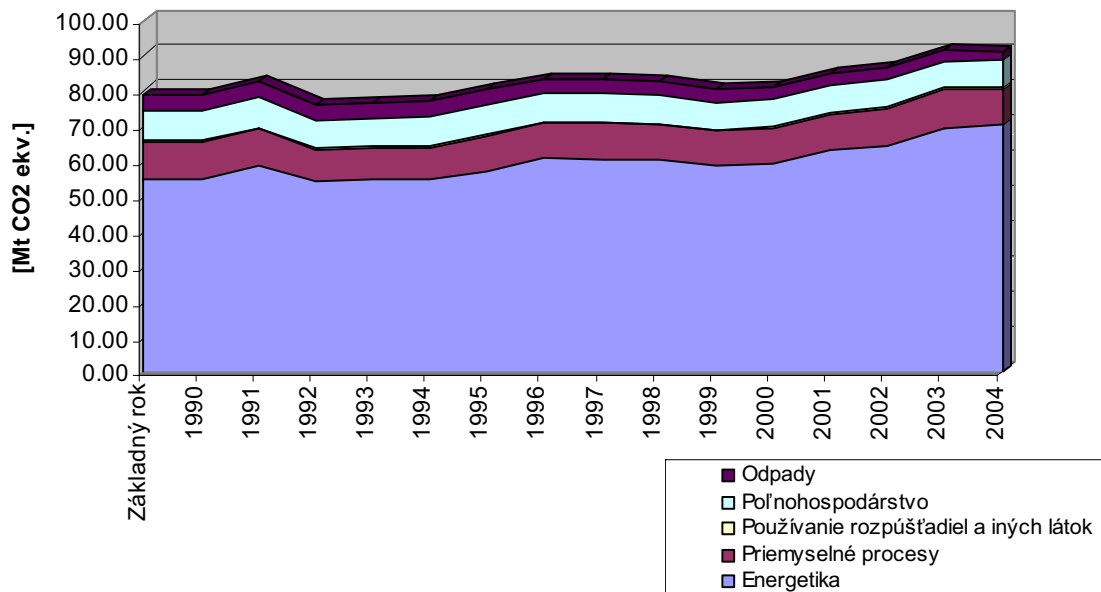
14

Vývoj emisií skleníkových plynov - podľa sektoru ČESKÁ REPUBLIKA



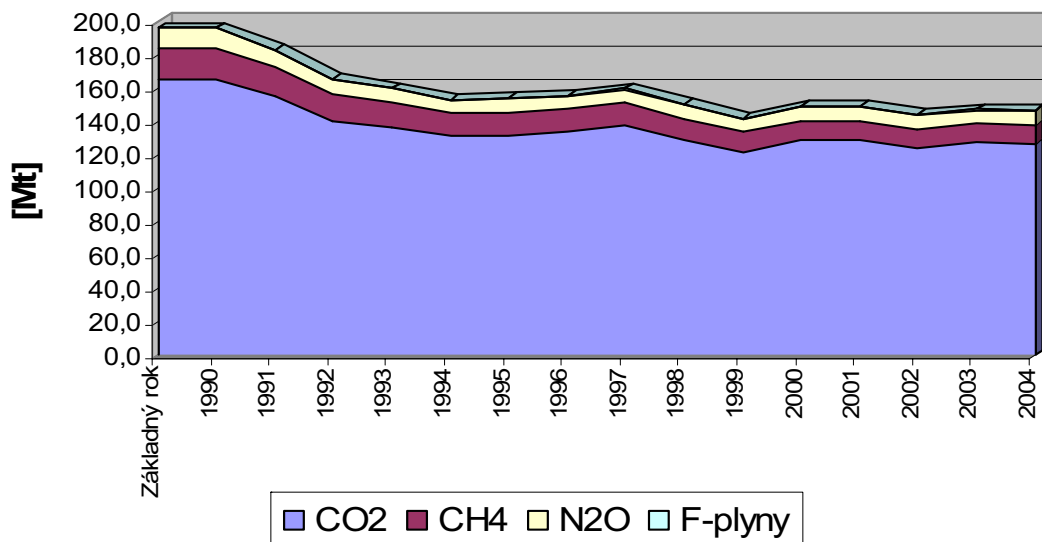
15

Vývoj emisií skleníkových plynov - podľa sektoru RAKÚSKO



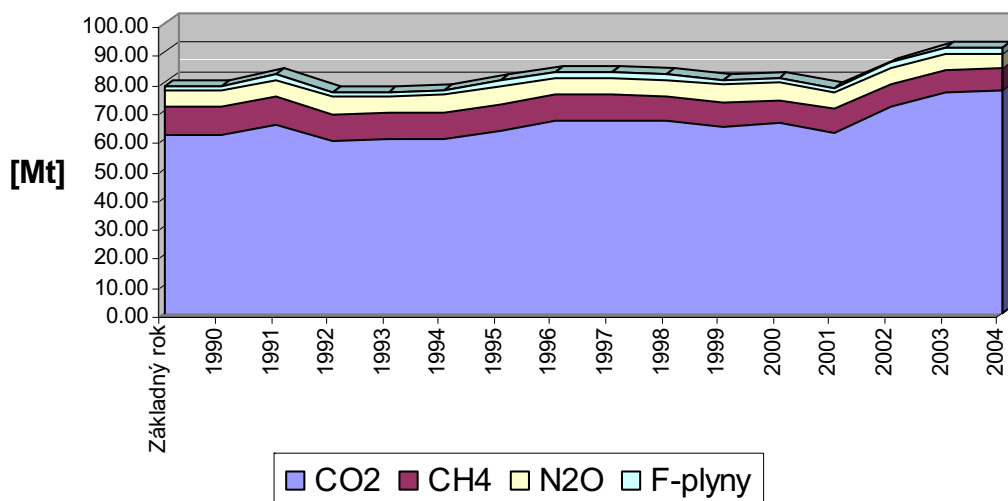
16

Vývoj skleníkových plynov - podľa plynov ČESKÁ REPUBLIKA



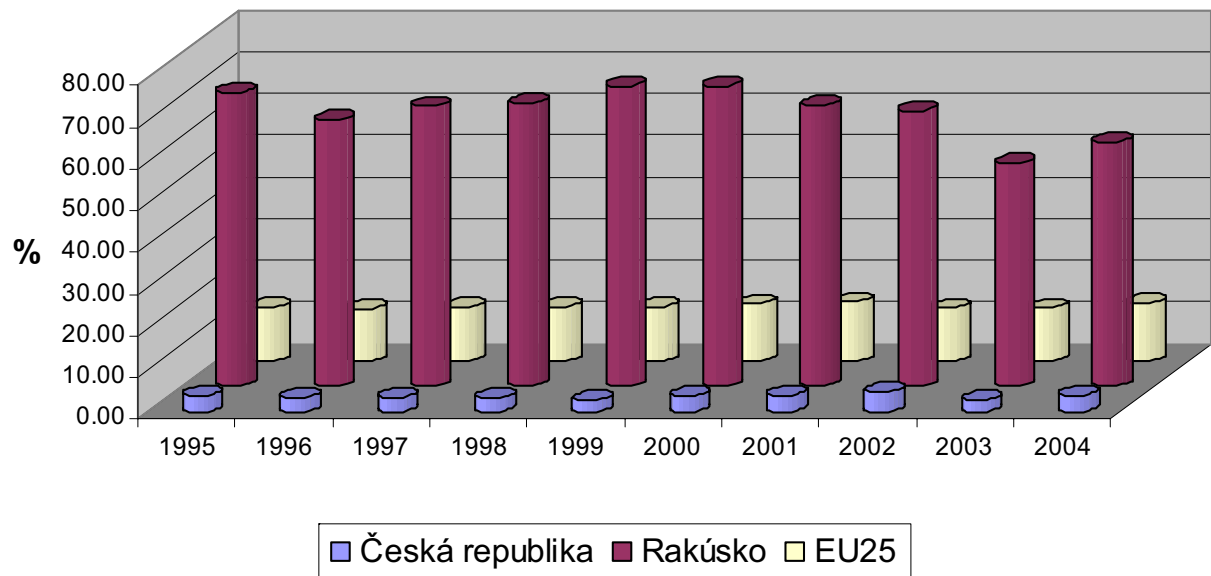
17

Vývoj emisií skleníkových plynov - podľa plynov RAKÚSKO



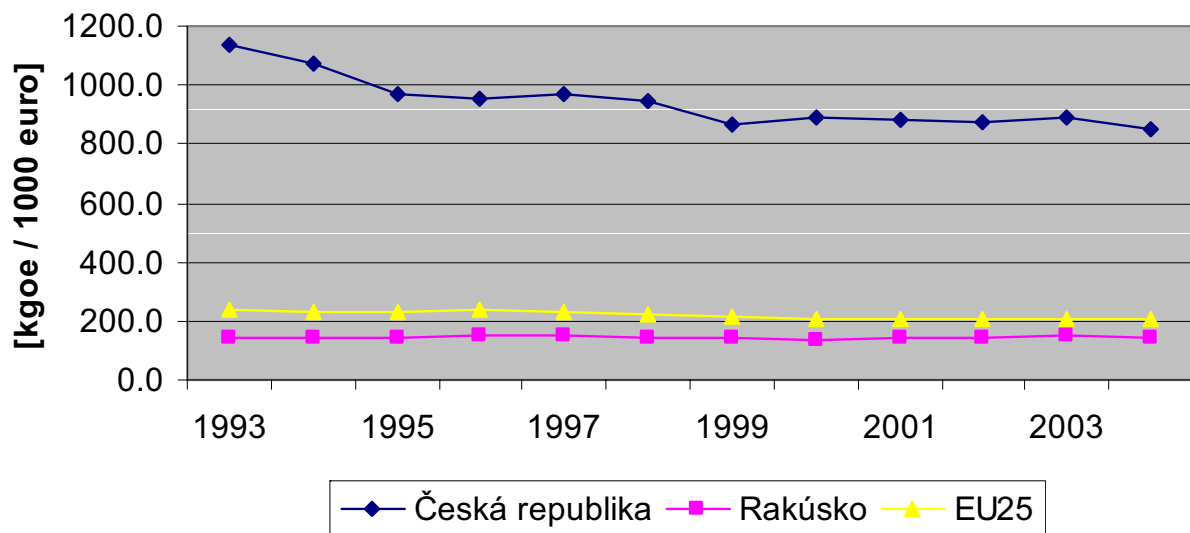
18

Podiel elektriny vyrobenej z OZE na celkovej spotrebe elektriny



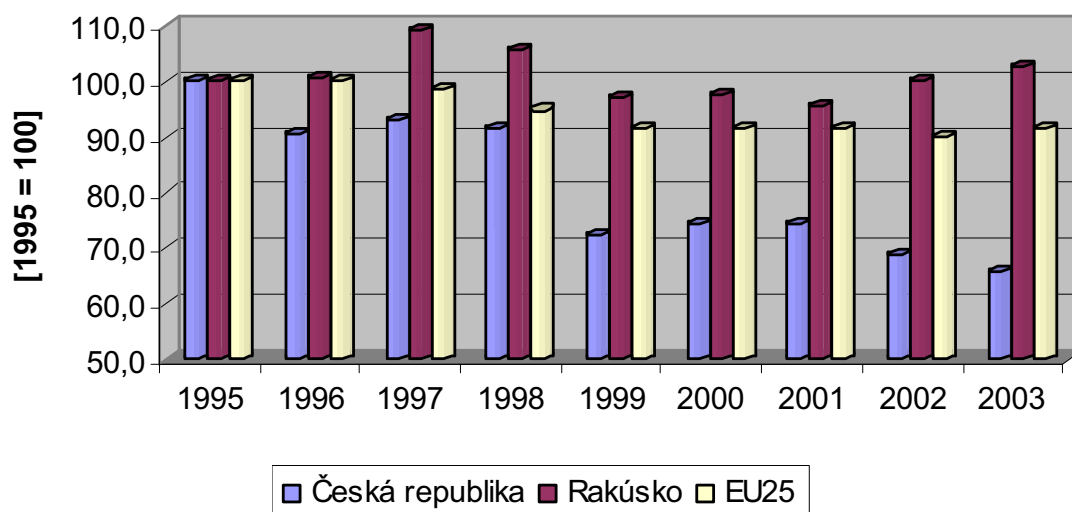
19

Energetická náročnosť ekonomiky



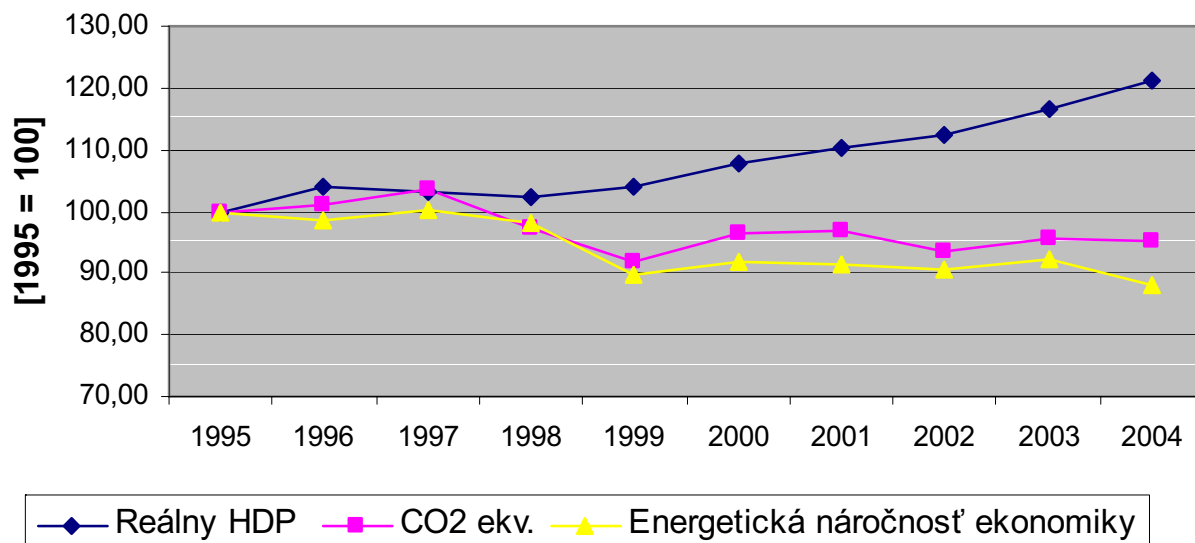
20

Energetická náročnosť - sektor priemyslu



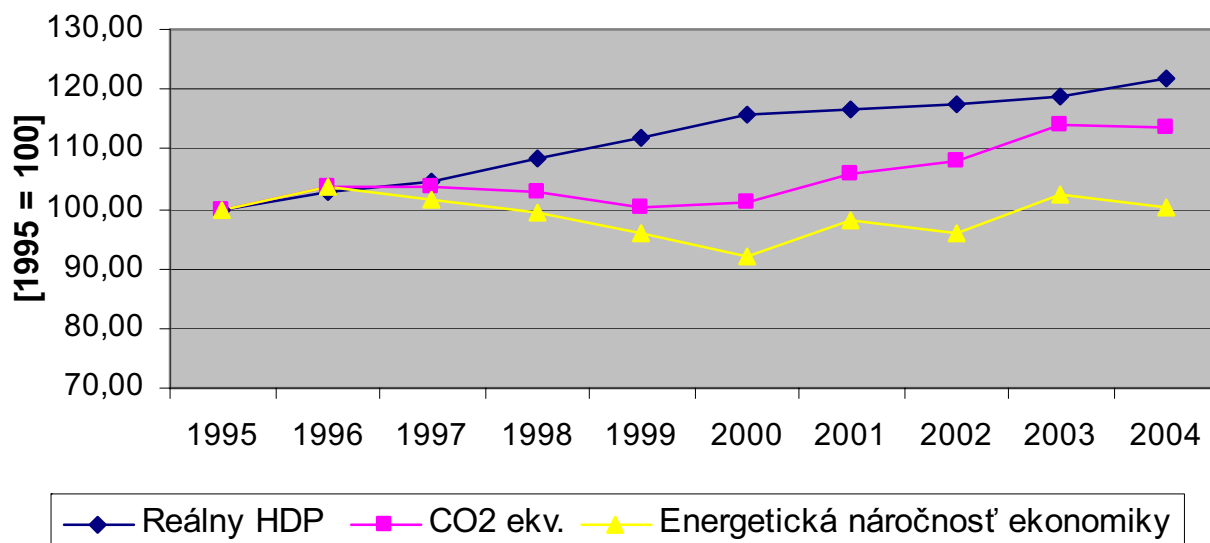
21

Závislosti ČESKÁ REPUBLIKA



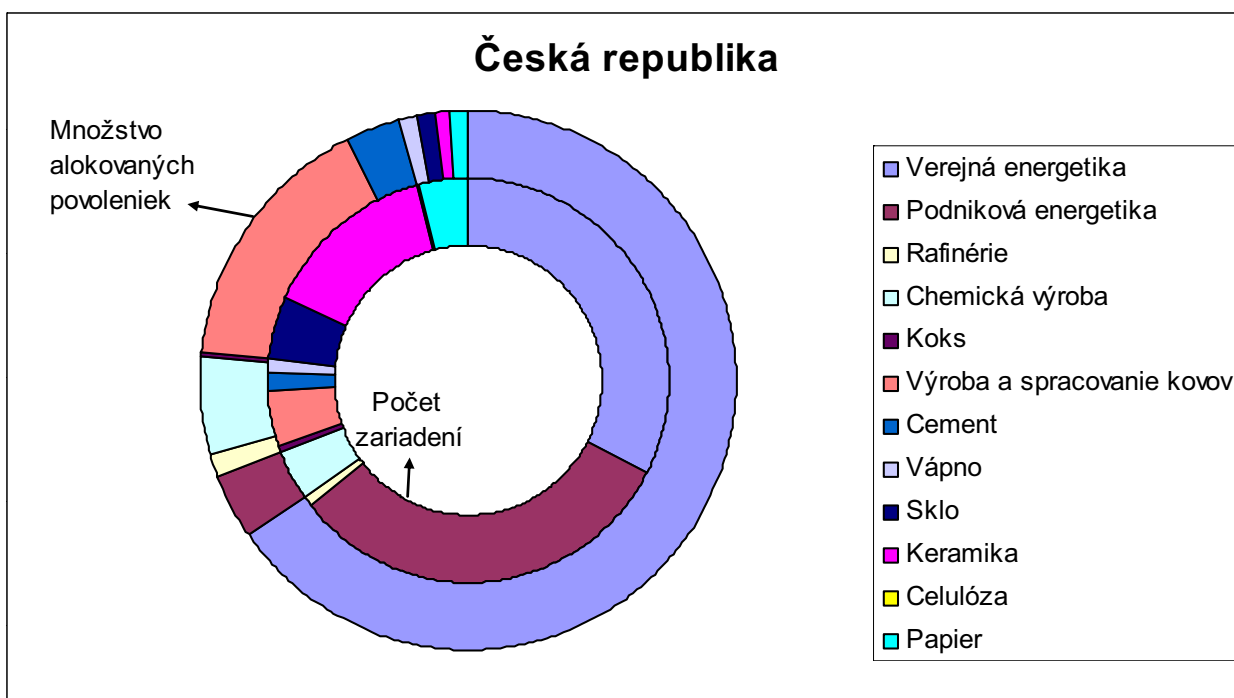
22

Závislosti RAKÚSKO

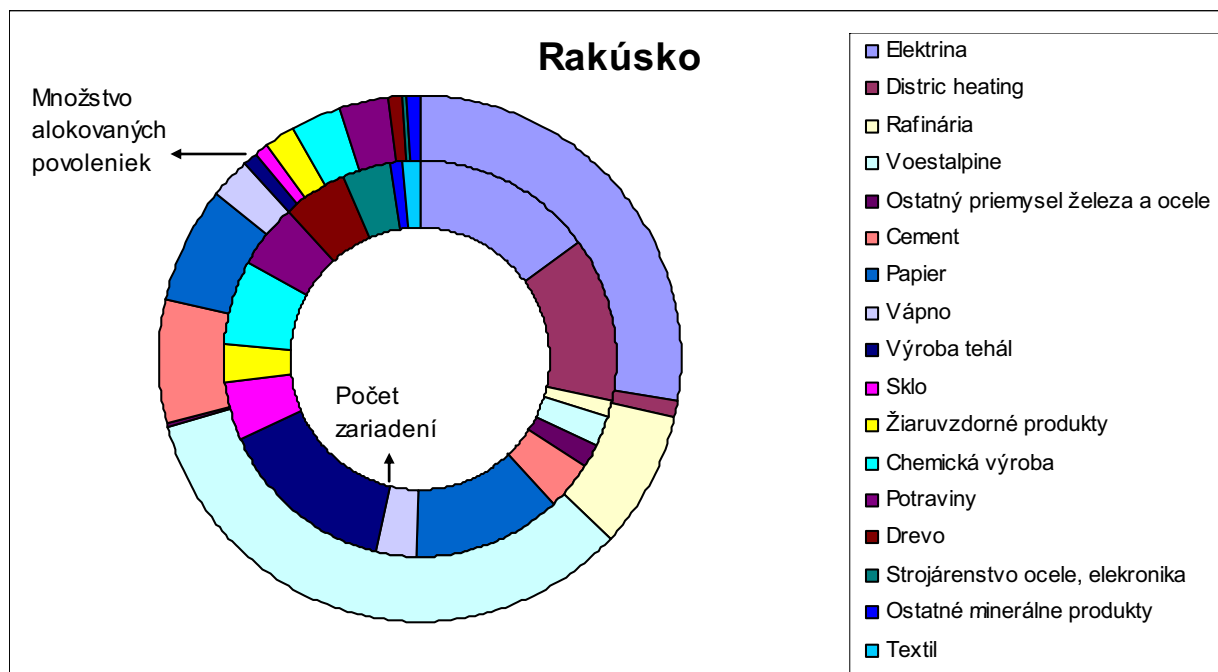


23

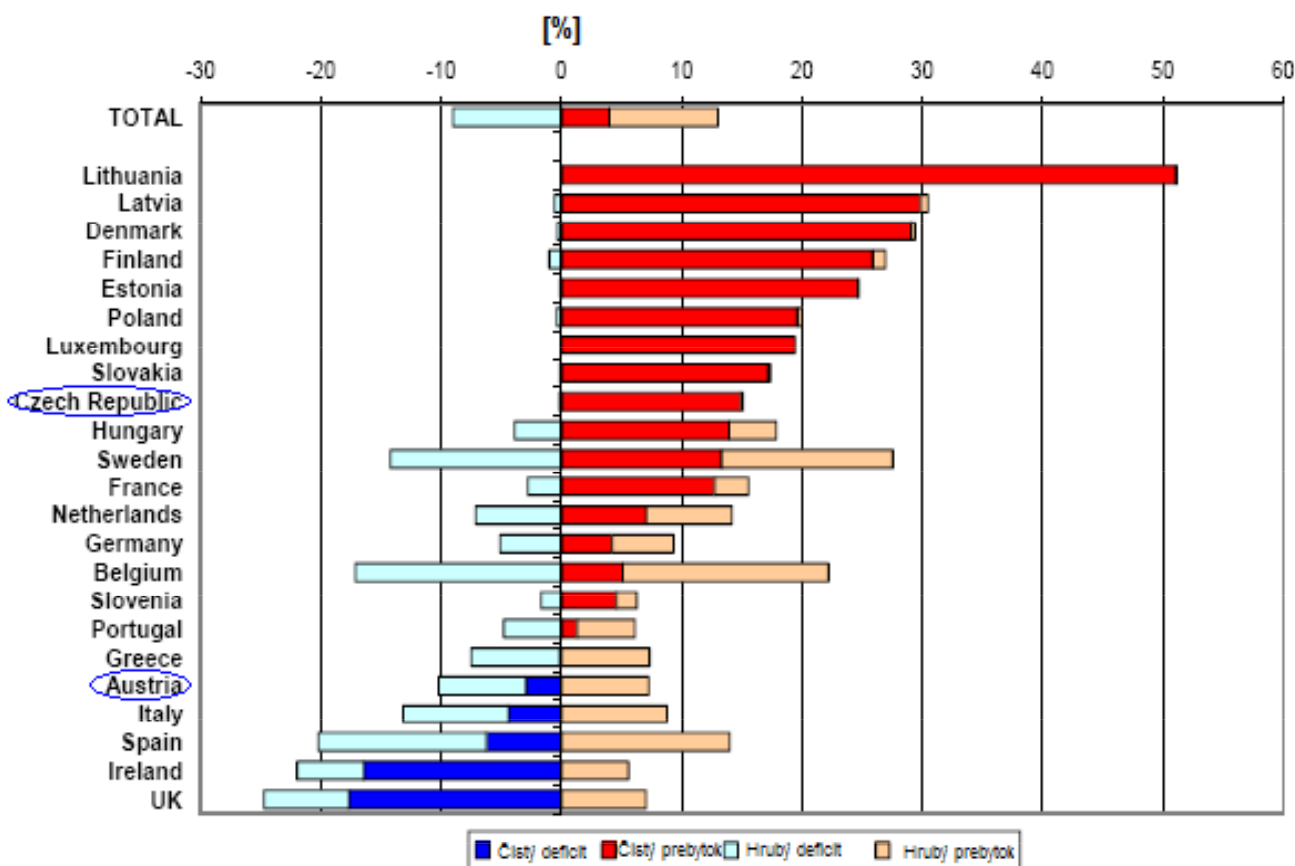
Česká republika



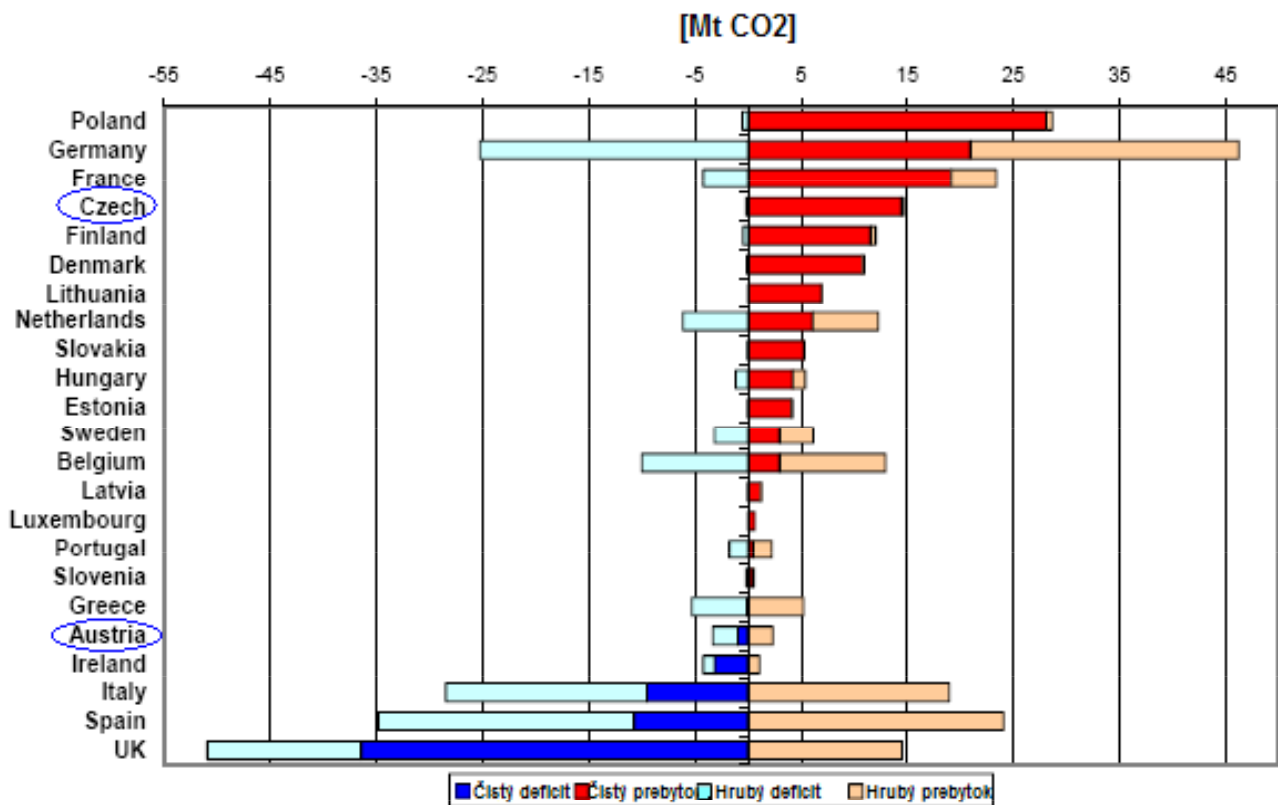
24



25



26



27

Lessons learned + next steps

EU ETS: illustration of energy intensity

	1990 (reference year)	allocation 2005-2007
Austria	78 Mt CO₂	33,2 Mt/year
Czech Republic	190 Mt CO₂	97,6 Mt/year

NEXT STEPS

detailed comparative analysis Austria / Czech Republic

28